

# PRA-012

(Ref. 2156)

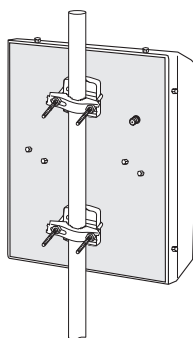
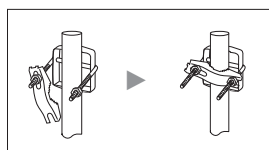
## ANTENA UHF UHF ANTENNA ANTENNE UHF



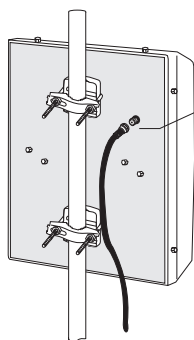
### Especificaciones técnicas / Technical specifications / Données techniques

Banda de frecuencias <i>Frequency band</i> Bande de fréquences		<b>MHz</b>	<b>470 - 862</b>
Ganancia <i>Gain</i> Gain		<b>dBi</b>	<b>11</b>
Impedancia <i>Impedance</i> Impédance		<b>Ω</b>	<b>75</b>
Relación D/A <i>Front-to-Back ratio</i> Rapport AV/AR		<b>dB</b>	<b>≥ 25</b>
Angulo de abertura <i>Beamwidth</i> Angle d'ouverture	H	°	<b>63</b>
	V	°	<b>50</b>
Carga frontal del viento <i>Frontal windload</i> Charge frontale au vent	150 km/h	<b>N</b>	<b>190</b>
	200 km/h	<b>N</b>	<b>340</b>
Carga lateral del viento <i>Lateral windload</i> Charge latérale au vent	150 km/h	<b>N</b>	<b>105</b>
	200 km/h	<b>N</b>	<b>185</b>

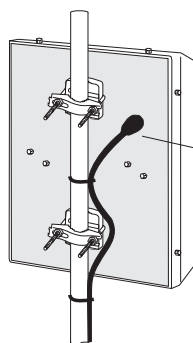
### Fijación al mástil / Mast fixing / Fixation sur le mât



### Conexión coaxial / Coaxial connection / Raccordement coaxial



conexión tipo F  
*F type connection*  
raccordement type F

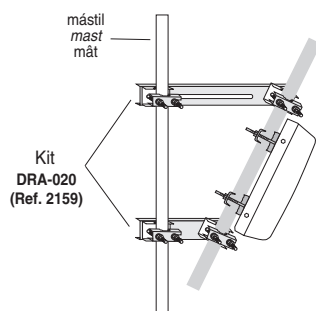


Proporcionar estanqueidad con la cinta suministrada  
*Provide watertightness with the tape supplied*  
Procurer étanchéité avec le ruban fourni

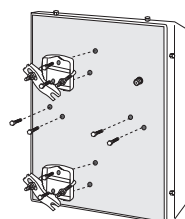
cinta auto-vulcanizable suministrada  
*self-vulcanizing tape supplied*  
ruban auto soudable fourni

30 cm

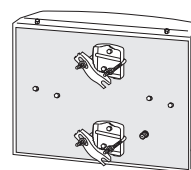
### Inclinación vertical / Vertical tilt / Inclinaison verticale



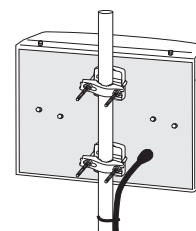
### Adaptación Polarización Vertical / Vertical Polarisation Adaptation / Adaptation Polarization Verticale



Soltar amarres y tornillos,  
*Loosen clamps and screws,*  
Desserrer étriers et vis,



y colocarlos donde se indica.  
*and place them where it is indicated.*  
et les placer où il est indiqué.



Instalar la antena.  
*Install the antenna.*  
Installer l'antenne.